



NEXT GEN TECHNOLOGY.
NEXT LEVEL CMYK+ INNOVATION.

Revoria Press EC2100S / EC2100

 **Revoria Press™**





NEXT GEN TECHNOLOGY. NEXT LEVEL CMYK+ INNOVATION.

Experience the promise of the future in a groundbreaking design structure,
where innovative expandable colours in a compact body inspire you to take on the
new challenges that can grow your business.



PRINT. CREATIVELY.

Discover next-level print quality and our specialty CMYK+ toner integrated into a familiar compact design. Experience high-quality CMYK printing with the Super EA-Eco toner which is utilized in the high-end models and the remarkable brilliance of metallic colours. Expanded features let anyone unlock a new world of printing possibilities effortlessly.



PRINT. PRODUCED.

Let superb productivity and professional print quality provide the robust support your business needs. Our print server ensures reliability as it excels in delivering high-quality, high-productivity solutions across a host of tasks.



PRINT. INTELLIGENTLY.

The consistent print quality and operational efficiency automation offer can revolutionize your business. Streamline tasks that require specialized expertise and skills, and watch your business grow sustainably.



PRINT. FLEXIBLY.

Meet a wider range of creative requirements thanks to paper compatibility, post-processing, and easy operation. Expand your printing possibilities and offer more of the innovative solutions that grow your business.



PRINT. CREATIVELY.

Unleash creativity and create new value

CMYK+ specialty toner print engine

Specialty toners are available in gold, silver, clear, pink, custom red, and textured paper toner.* One specialty toner can be used in addition to CMYK for overprinting. Unique patented technology improves productivity, image quality, and paper versatility performance with the press in a compact size.

* Availability of Gold and Silver will be announced later.



Combine gold or silver with CMYK to achieve spectacular metallic colours thanks to Fujifilm technology.



The use of clear toner alone or overprinted on CMYK produces a textured, glossy feel and a sense of luxury.



Multi-coloured Room

Suitable for creative social media content

CMYK + Pink



Expand the colour gamut using pink toner and make it possible to reproduce vivid RGB and spot colours such as red, orange, and purple that can't be achieved using CMYK alone.

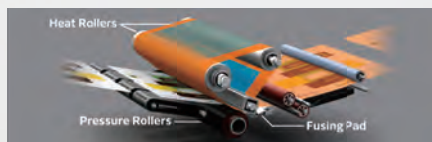


PRINT. PRODUCED.

Making productivity and print quality work together

100 ppm high productivity

- Realize top speed for both uncoated paper (52-400 gsm) and coated paper (72-400 gsm).
- High-productivity A3 printing at 55 ppm.
- The compact belt-roll fuser that enables efficient heating achieves high productivity and high image quality on wide variety of paper stocks including heavyweight.



Calibration for G7 standard*

G7 calibration achieves consistent gray balance and neutral tonality across different printing processes, substrates, and printing conditions. A standard that is widely adopted in the printing industry to ensure colour consistency and quality across various printing technologies and platforms.

Note: G7® is Idealliance's global industry-leading set of specifications for achieving visual similarity across all print processes.

* G7 certified the combination with Revoria Flow Print Servers.

High resolution-, high productivity-ready print server

- 1,200 x 1,200 dpi RIP processing reproduces images with their original vivid quality. Even fine text and lines can be reproduced at 1,200 dpi resolution.
- High-precision 3D calibration and feedback functions ensure consistent colour reproduction.
- Different-sized data can be imposed at any desired position for more efficient use of banner sheets and reduced paper waste.

For
ing
dia
ent

Master specialty toner with a full range of support functions

- Automatic pink toner optimization to realize wider colour gamut and smooth skin tone*.
- Specialty Colour Quick Viewer (SCQV) allows user to preview the effect of specialty colours as well as different substrates before printing.
- Users can quickly change to a specific specialty colour without special skills.

* Available in Revoria Flow



Fujifilm Metallic Swatches

Proprietary technology for CMYK high image quality

Super EA*-Eco toner (CMYK)

- Features high-quality Super EA-Eco toner identical to those used in our high-end models.
- Toner particle size has been reduced to among the smallest in the industry, and toner particle shape standardized for crisp rendering of detailed characters and fine lines.
- Gradations, such as halftones, are reproduced more smoothly and beautifully for more even blue skies and skin tones.

* EA : Emulsion Aggregation

2,400 x 2,400 dpi LED printhead

Thanks to our unique technology, the compact, high-image-quality LED printhead delivers high-resolution output at up to 2,400 x 2,400 dpi for sharp lines and images, enabling high-definition printing.

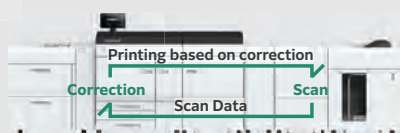


PRINT. INTELLIGENTLY.

Supporting your business growth

Real-time detection and correction during printing*

- Automatic detection and correction of colour density variations and front-to-back misalignments during printing.
- Optimization continues throughout the printing process, with little to no decrease in print speed.



* Smart Monitoring Gate D1

AI correction (available in Revoria Flow)

- AI automatically identifies the scene per photo, applies appropriate image correction, and prints them beautifully.

Person	●skin tone ●brightness	indoor	●texture ●brightness
Landscape	●sky colour ●noise	outdoor	●backlight ●sharpness

Print Inspection System* (available in Revoria Flow)

- Printed material is compared with the RIP image during printing to detect anomalies.
- This streamlines the laborious task of checking for print irregularities, saving significant time and effort.



Image inspection : Detects dots, dirt, print defects, and paper folds.

Barcode/OCR : Checks readability of characters and barcodes, numbering information continuity, and front/back characters and numbering continuity.

* Optional

PRINT. FLEXIBLY.

More printing possibilities than ever before

- Offer better solutions thanks to reliable technologies that enable a wide variety of paper sizes and post-processing.
- Supports a wide range of paper sizes, from a minimum of 90 x 146 mm up to 330 x 660 mm, with optional banner sheet printing (single-sided) up to 330 x 1,300 mm.
- Paper weights flexibility from lightweight 52 gsm to heavyweight 400 gsm.



Folding carton and label sticker

Printing on envelopes with a minimum paper width of 90 mm ▲

▼ Printing on water-resistant paper for menu lists

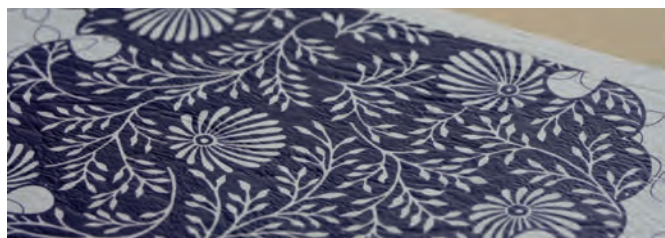


▲ Supports banner sheet sizes up to 330 x 1,300 mm.

Technology that keeps you ready for anything

Print beautifully even on textured paper

The intermediate transfer belt ensures reliable, high-quality output even on typically difficult-to-print textured media, such as embossed papers.



Removes static electricity for stable paper handling*

- Enables stable paper handling.
- Protect operators safely from high amount of static electricity.

* Static Eliminator D1

Reliable paper feed across various types of paper*

The air-suction feed tray, equipped with our proprietary Shuttle Head technology, ensures a reliable feed of papers prone to paper dust accumulation, textured papers, and coated papers that tend to stick together.

* Air Suction Feeder

Revoria Press EC2100S / EC2100

Full Configuration



Various Options Available According to Needs

Full Configuration W10,211 x D834 x H1,370 mm*

* Extension Kit and Extension Kit Extra are not included in height.

Feeding Options



High Capacity Feeder C3-DS+
Multi Sheet Inserter for Banner Print

Air Assist **Multifeed Detection**
2,100 sheets x 2 trays + 250 sheets
Maximum A3, 330 x 660 mm



High Capacity Feeder C3-DS+
2nd High Capacity Feeder C1-DS+
Multi Sheet Inserter for Banner Print

Air Assist **Multifeed Detection**
2,100 sheets x 4 trays + 250 sheets
Maximum A3, 330 x 660 mm



Air Suction Feeder C1-DS*1

Air Suction **Multifeed Detection**
2,200 sheets x 2 trays + 250 sheets
Maximum A3, 330 x 660 mm



Chained Air Suction Feeder
C1-DS-L*1 + C1-DS-R

Air Suction **Multifeed Detection**
2,200 sheets x 4 trays + 250 sheets
Maximum A3, 330 x 660 mm



Air Suction Feeder C1-DSXL*1 +
Banner Unit for Air Suction
Feeder C1-DSXL

Air Suction **Multifeed Detection**
Long Sheets Feeding
900 sheets + 2,200 sheets + 250 sheets
Maximum A3, 330 x 1,300 mm (Upper tray)



Chained Air Suction Feeder
C1-DSXL-L*1 + C1-DS-R +
Banner Unit for Air Suction Feeder C1-DSXL

Air Suction **Multifeed Detection**
Long Sheets Feeding
900 sheets + 2,200 sheets x 3 trays + 250 sheets
Maximum A3, 330 x 1,300 mm (Left Upper tray)

*1: Multi Sheet Inserter for Banner Print is equipped as standard.

*2: Available in the limited countries.

*3: Optional

Output Options

① Interface Decurler
Module D1

Real Time Curl Correction

② Inserter D1

Cover / Sheet Insertion

③ GBC® FuturoPunch Pro*2

Punch for Various Bindings

④ Static Eliminator D1

Eliminate Static Electricity

⑤ Smart Monitoring Gate D1

Scanning Print pages

⑥ High Capacity Stacker A1

5000-sheet Offset-stacking

Stacker cart

Long Sheets Output*3

High Capacity Stacker A1
with Transport Module

Connection with 3rd party finisher

5000-sheet Offset-stacking

Stacker cart

Long Sheets Output*3

⑦ Crease / Two-sided Trimmer D2

Two-Sided Trim

Crease

⑧ Folder Unit CD2

Z Fold Half Sheet

Tri-fold

⑨ Finisher D6 with Booklet Maker

Sort / Stack

Staple

Punch*3

Single fold

Saddle Staple

Long sheets Output

Finisher D6

Sort / Stack

Staple

Punch*3

Long sheets Output

⑩ Square Back Fold Trimmer D1

Face Trim

Square Back

Offset Catch Tray

Offset Stack



Long Catch
Tray

Long Sheets Output



Finishing Applications



Cover / Sheet
Insertion



Punch



Staple



Saddle
Staple



Single
Fold



Z Fold
Half Sheet



Tri-Fold



Crease*1



Face Trim



Two-Sided
Trim



Full Bleed
Trim*2



Square
Back

*1: Up to 5 creases are possible for mountain fold and valley fold. *2: Full Bleed Trim is performed for Two-Sided Trim and Face Trim.

Print Servers



Revoria Flow
EC21



Fiery EC21



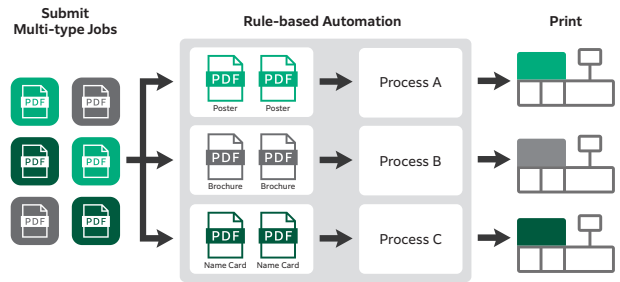
Fiery EC22

Advanced Digital Workflow Automation. Made Simple.

Revoria XMF PressReady

Revoria XMF PressReady is an intuitive centralized management software that empowers Print Service Providers to manage job submission from multiple sources (Web-To-Print System, Print Management Information System, and PDF files from customers) efficiently.

With Revoria XMF PressReady, you can also automate repetitive tasks such as pre-flighting, imposition, grouping, sorting, numbering, etc. and direct specific print jobs to the appropriate digital press based on the prescribed condition set.



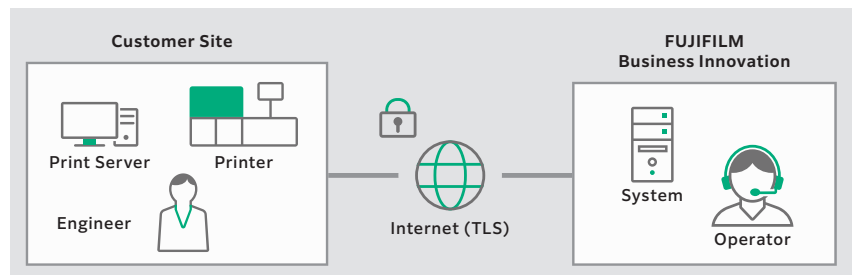
Reliable Support System

Remote Services*

FUJIFILM Business Innovation Remote Services enhance machine reliability, uptime, and productivity, ensuring seamless business operations. Using remote services to connect our support systems and tools with skilled teams worldwide, we deliver responsive assistance precisely when you need it. This proactive approach, supported by in-depth knowledge and comprehensive product understanding, lets us offer the solutions you need.

* This support availability varies depending on the location.
For more information, please consult your assigned sales representative.

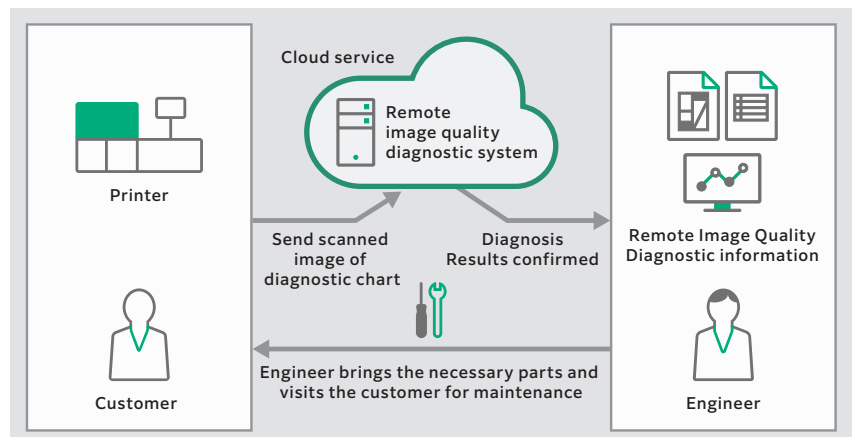
- Reduce downtime by transmitting machine data to detect and prevent problems.
- Keep your printing supplies stocked and automatically delivered, improving utilisation efficiency.
- Automatically report billing meters to save time and improve accuracy.



Remote Image Quality Diagnostics

By diagnosing the output image quality of customer machines remotely, it contributes to stabilizing image quality.

- The necessary parts and the repair procedures can be prepared in advance, thus minimizing the machine downtime.
- The diagnostic result and maintenance history of each machine are remotely collected and accumulated, and these records are used for effective maintenance.



Adobe PostScript Adobe PDF Print Engine

G7 certified the combination with Revoria Flow Print Servers.

FUJIFILM

FUJIFILM Business Innovation Australia Pty Ltd
8 Khartoum Road MACQUARIE PARK NSW 2113 Australia
Tel. +61 2 9856 5000

fujifilm.com/fbau

The available model varies depending on the country/region. Please ask the sales representatives for details.

The product specifications, appearance and other details in this brochure are subject to change without notice for improvements.

Reproduction Prohibitions Please note that reproduction of the following is prohibited by law : •Domestic and foreign currencies, government-issued securities, and national bonds and local bond certificates. •Unused postage stamps, post cards, etc. •Certificate stamps stipulated by law. •Reproducing works forming the subject matter of copyright (literary works, musical works, paintings, engravings, maps, cinematographic works, drawings, photographic works, etc.) is not permitted unless the reproduction is for the purpose of personal use, family use or other similar uses within a limited circle.

Trademarks •FUJIFILM and FUJIFILM logo are registered trademarks or trademarks of FUJIFILM Corporation. •Revoria, Revoria logo, Revoria Press and Revoria Flow are registered trademarks or trademarks of FUJIFILM Business Innovation Corp. •Adobe, Adobe logo, PostScript and PostScript logo, Adobe PDF, Adobe PDF Print Engine are either registered trademarks or trademarks of Adobe in the United States and/or other countries. •Windows, Windows Server and Active Directory are registered trademarks of Microsoft Corporation. •Fiery and the Fiery logo are trademarks or registered trademarks of Fiery, LLC and/or its wholly owned subsidiaries in the U.S. and/or certain other countries. All rights reserved. •G7 is a registered trademark of Idealliance. •Idealliance is a registered trademark of PRINTING United Alliance. •PANTONE and other Pantone trademarks are trademarks or registered trademarks of Pantone LLC in the United States and/or other countries. •All product names and company names mentioned in this brochure are trademarks or registered trademarks of their respective companies.



For Your Safety

Before using the product, read the Instruction Manual carefully for proper use. Use the product with the power source and voltage specified. Be sure to establish ground connection. Otherwise, electronic shock may result in the case of a failure or short circuit.

The information is as of November, 2024. PIC-0235 AU (2405-R2)